



DESD Studio 2005 Integrated Control System

Control Everywhere

System Descriptions

- ☑ The DESD Studio 2005 software consists two setup files called server and client (user).
- ☑ Typical applications are audio visual system integration, technology enable classroom, lighting system and server room management / monitoring.
- ☑ Works on Windows 2000/XP/NT.
- ☑ Most affordable solution for computer-based automation in the market.
- ☑ Easy to use automation software with no programming skills required.

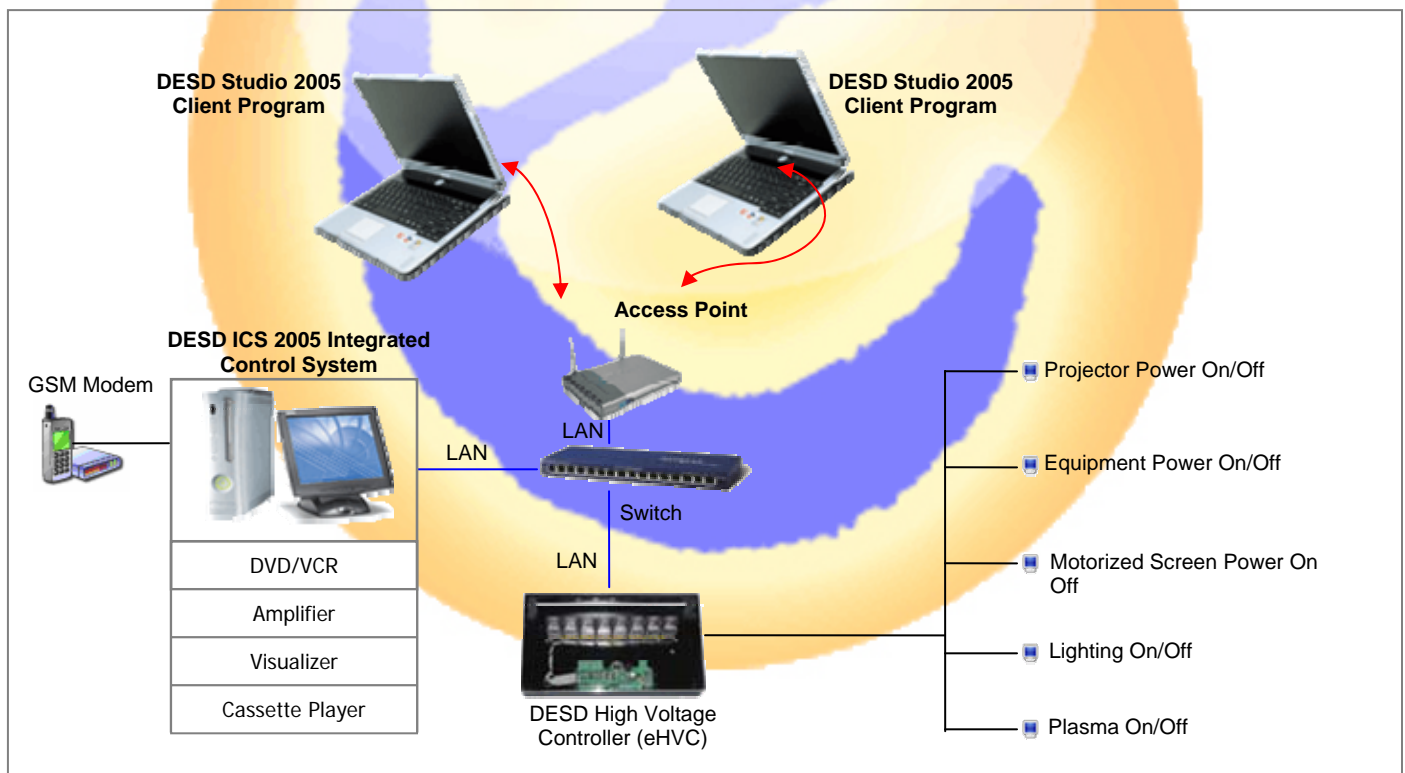
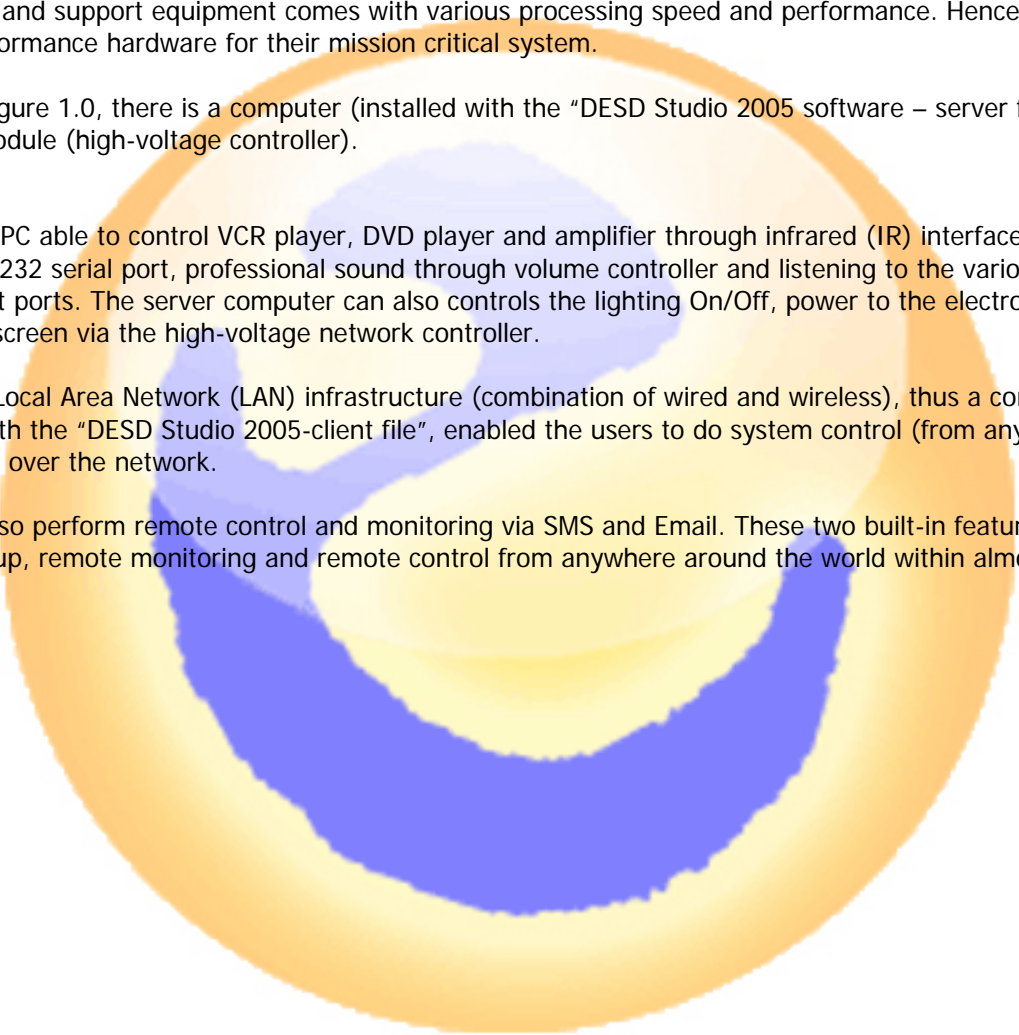


Figure 1.0 – Overview of System Implementation

Advantages

- Able to do remote control from unlimited number of computers over the Ethernet
- Able to do remote control via wireless (PC with WiFi) and wired local area network as well as through SMS and email
- No specialize control system (hardware) and touch panel required. Use commonly available hardware in the market hence reduces the system downtime (time to repair)
- Computers and other support equipment can easily be purchased elsewhere thus less reliance on one particular supplier
- Computers and support equipment comes with various processing speed and performance. Hence, users may use higher performance hardware for their mission critical system.
- From the figure 1.0, there is a computer (installed with the “DESD Studio 2005 software – server file”) and the network module (high-voltage controller).
- The server PC able to control VCR player, DVD player and amplifier through infrared (IR) interface, LCD Projector through RS232 serial port, professional sound through volume controller and listening to the various sensors via the digital input ports. The server computer can also controls the lighting On/Off, power to the electronic equipment and motorized screen via the high-voltage network controller.
- There is a Local Area Network (LAN) infrastructure (combination of wired and wireless), thus a computers that were installed with the “DESD Studio 2005-client file”, enabled the users to do system control (from any of these computers) over the network.
- User can also perform remote control and monitoring via SMS and Email. These two built-in features let users to do system setup, remote monitoring and remote control from anywhere around the world within almost no time.



Software Screenshots

DESD Studio 2005 Run Mode enables end user to control the environment such as user can:

- Switch on/off the light
- Operate the LCD Projector
- Operate the motorized screen
- Operate the VCR and DVD
- Get status from the sensor device
- Switch channel input

Easy, Efficient and Reliable!!



Figure 2.0 – DESD Studio 2005 Run mode

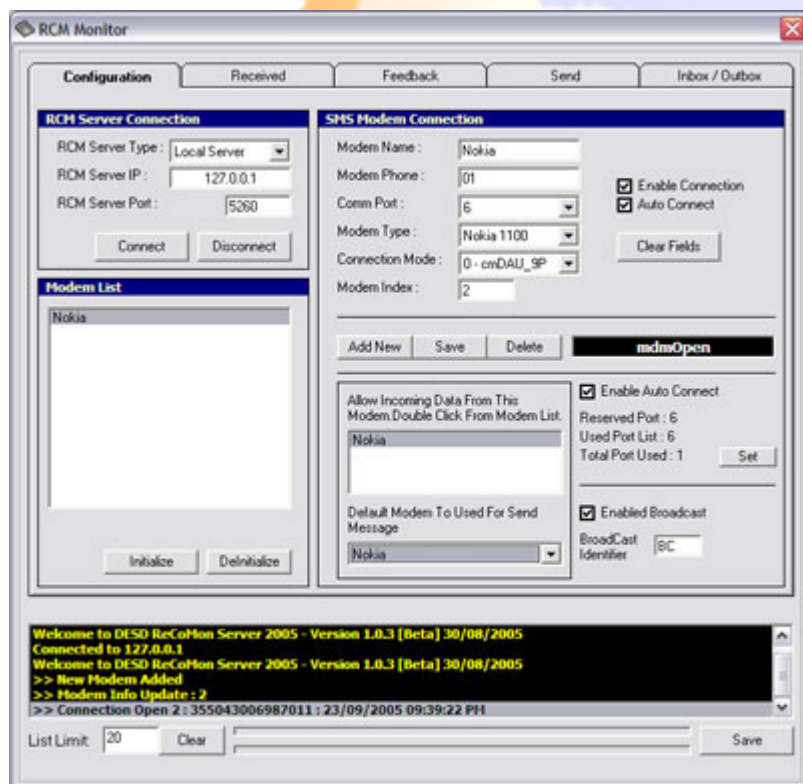


Figure 2.1 – Communication Configuration

DESD Studio 2005 Communication enable users to control their environment by using Short Messaging System (SMS). Figure 2.1 show the Communication Module to configure the device (GSM/NOKIA PHONE) and set the SMS.

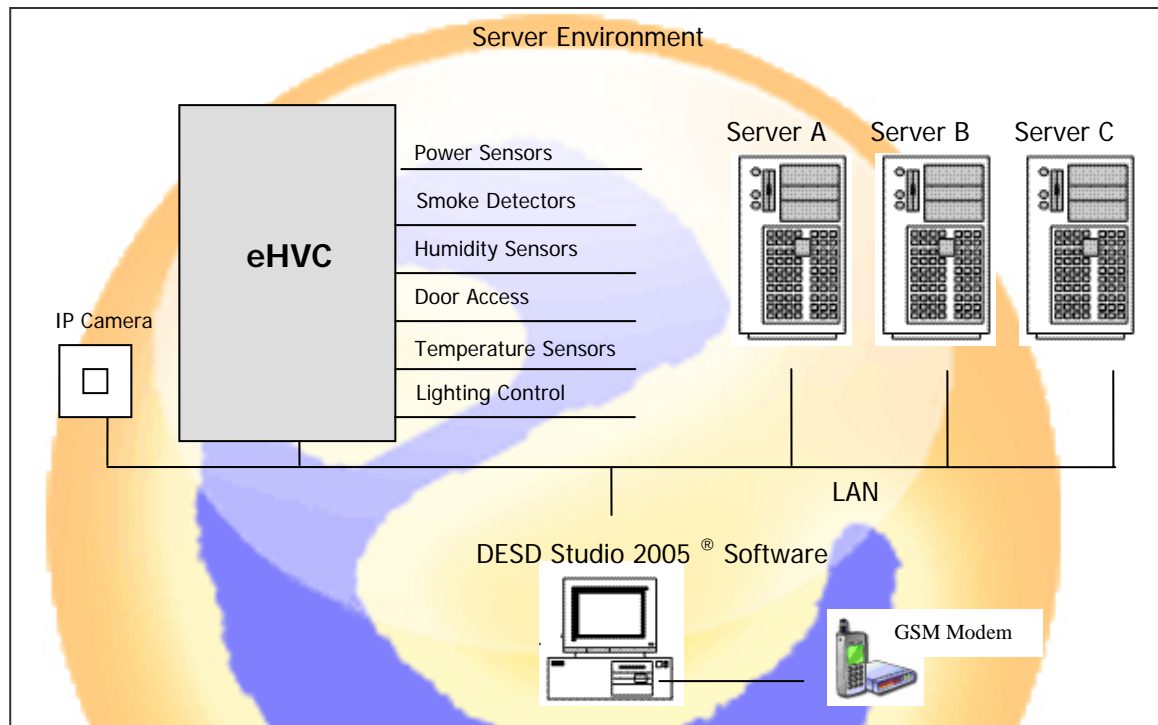
For Example, user can switch on/off the light by sending an SMS to the DESD Studio 2005 System.

Enjoy your dreamt system control from everywhere.

EARNESTCOM SDN. BHD. are introducing our two affordable solutions for managing Computer Server and PC which is in objective to increase user productivity and meet the needs for both organization and individual users. DESD Studio 2005 software excellent features such a sms capability and scheduling can help the user to monitor their server and pc anywhere and anytime.

DESD Server Management™ solution

The purpose of *DESD Server Management™* solution is to monitor the Server computer, server environment (room) and application / services in the server.



DESD Server Management™ monitor the Server Environment as listed below:

- Power Sensor- Monitor incoming power due to the power failure.
- Door Access – Integration with the door access device to control the server room access.
- Temperature Sensor – Monitor the temperature of the server room.
- Smoke Detector – Detect smoke in the server room.
- IP Camera – Monitor activity in the server room.
- Humidity Sensor – Detect the vapour content in the surrounding area.
- Lighting Control – Control lighting in the server room.

DESD Server Management™ monitor the Server Computer as listed below:

- Shutdown, reboot or wake the server.

DESD Server Management™ monitors the application / services as below:

To monitor server from remote, example (shown as figure 1.2 below): to ensure that specific application is running. *DESD Server Management™* will ensure that the specific application on the server is running, if any expected application stop running, then *DESD Server Management™* will execute an action as the user set such sms alert or restart the services/application.

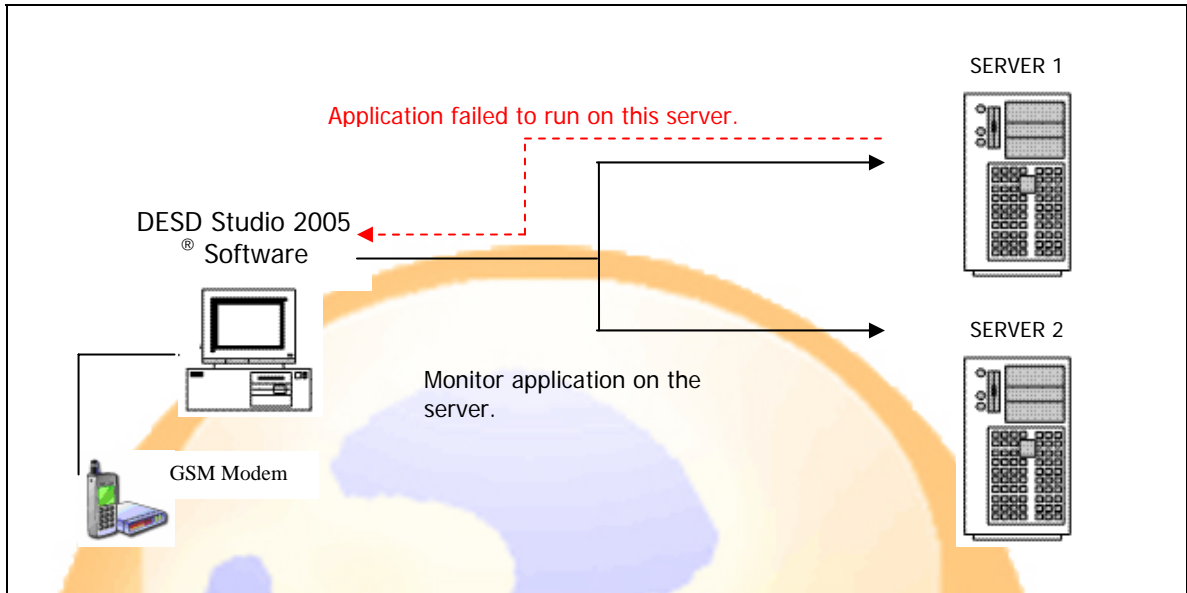


Figure 1.2: Application/Services Monitoring

Requirement needed for *DESD Server Management™* solution?

o DESD Studio 2005® Software	o Humidity Sensor
o eHvc Controller	o Temperature Sensor
o GSM Modem/ Nokia Phone	o Smoke Detector
o Power Sensor	o Door Access
o IP Camera	o Lighting Control

DESD Studio 2005 Server Monitor Screenshot

DESD Studio 2005 Server Monitor capable to monitor remote server on networks.

Easy to setup and come with many features

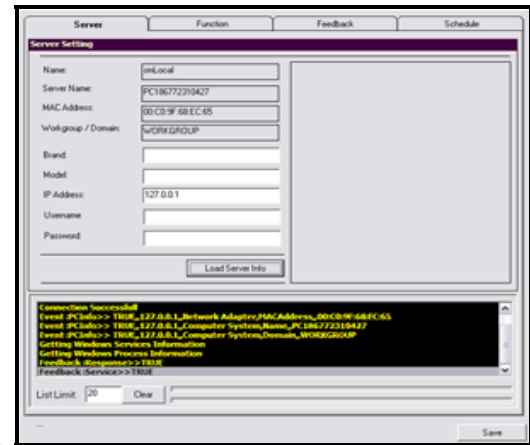


Figure 1.0-Server Monitor Configuration module

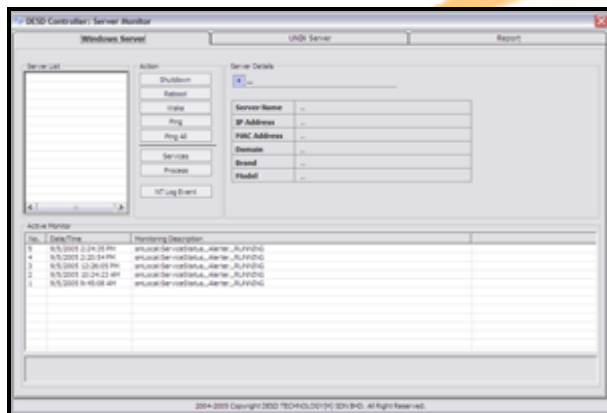


Figure 2.0-Server Monitor Runtime module

DESD Studio 2005 Server Monitor generates the server monitoring activity report.

Help you in making your analysis.

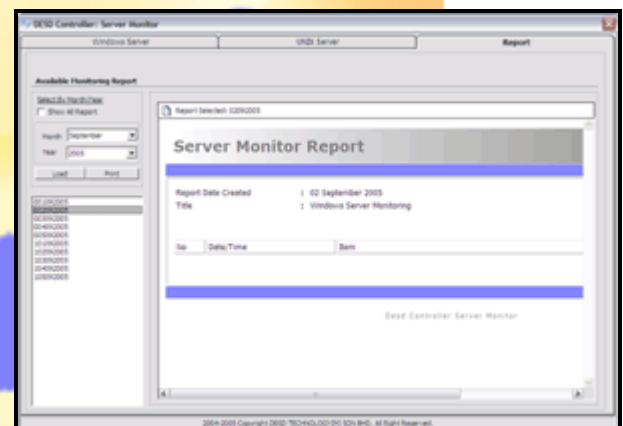


Figure 3.0-Server Monitor Report module



DESD Studio 2005

Server Monitoring and Management
solution

Remote Control and Alert Notification

DESD Studio 2005[®] software is a powerful and versatile application for many integrated system solutions. DESD Studio 2005 software provides an easiest, efficient and reliability solution which can help system integrators, engineers, technicians, lecturers and students automate their daily activities.

Below is the list of the DESD Studio 2005[®] Server Monitoring features:

Server Management

- ☐ Monitor both Windows and UNIX platform.
- ☐ Monitor server status.
- ☐ Shutdown, reboot and wake the servers.
- ☐ Monitor specific services/ application.
- ☐ Stop and restart the specific services and application.
- ☐ Get status IP based device such a router.

SMS

- ☐ Check server status
- ☐ Check services/ application status
- ☐ Start and stop the specific services/ application
- ☐ Shutdown, reboot and wake the server
- ☐ Check IP based device status
- ☐ Send broadcast message

Schedule

Features as listed above (server management) can be continuous monitor by using the built in time scheduling.

Report

Generate a daily report of the monitoring activities.



DESD Studio 2005

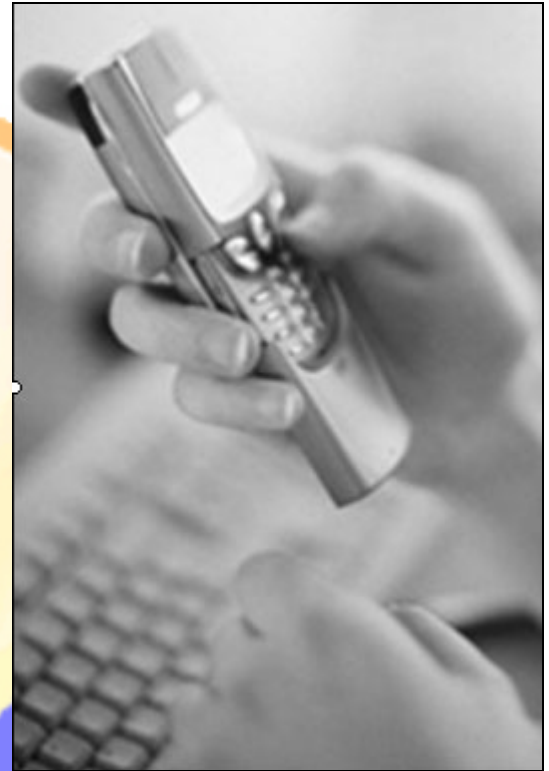
SMS Remote Control & Monitoring and SMS Information Center Technology Solution

Easy, Efficient and Secure

DESD Studio 2005[®] software is a powerful and versatile application for many integrated system solutions. DESD Studio 2005[®] software provides an easiest, efficient and reliable solution which can help system integrators, engineers, technicians, lecturers and students automate their daily activities.

We are introducing our fantastic and affordable solutions for Remote Control, Remote Monitor and SMS Information Center which is in objective to provide the power of technology in controlling devices and managing information just inside users pocket via Mobile Phone.

Have you ever thought of using your Mobile Phone to control or monitor devices? Did you ever imagine that you can access your useful data at anytime from anywhere via your Mobile Phone? Today, with this great feature of DESD Studio 2005[®], you can extend your Mobile Phone into a powerful long distance remote control and remote monitor device. This great software can help turning your Faculty's an SMS Information Center.



Fast SMS Broadcast

DESD Studio 2005[®] would be your best solution for SMS broadcasting because this software was built to support multiple SMS Modem connections. All these modems are working in parallel where you can utilize it to create a fast SMS broadcasting system.

Customize SMS Function

You can also speed up your faculty's development of custom SMS service that suits the faculty needs where you can use DESD Studio 2005[®] as an SMS gateway for your system you may have written in Microsoft[®] Visual Basic 6.0.

We have created a flexible and easy to use SMS gateway in order to enhance your customized faculty software.

Your software can have full access to all SMS modems connected to DESD Studio 2005[®] by simply plug-in our *DESD Studio Connection Active-X Component*

FACULTY'S INFORMATION CENTER

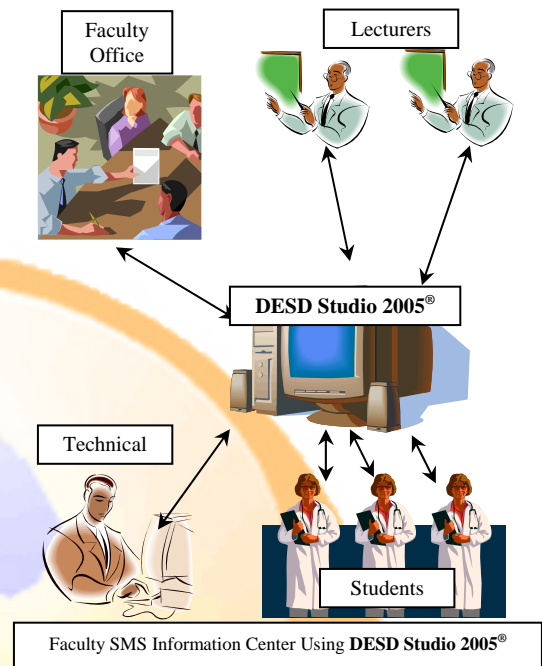
SMS Information exchange is the new technology trend that will multiply users productivity where they can get all the information they need as they request.

Faculty's Information Center using SMS technology is another great way to get or broadcast information via SMS to Students & Lecturers. They can also retrieve latest information and updates from faculty as quick as the SMS technology available today.

In this fast gigabit world, lecturers can move faster to educate students better because they can just request to use class via SMS, initialize their teaching Equipments (Screen, Lights, Projector and etc..), get latest faculty information updates and broadcast latest information to students while they are on the move or doing other important works.

With these great features, we can manipulate the usefulness of SMS technology to simplify our faculty's routines like:

- ❖ Class registration via SMS.
- ❖ Remotely initialize / de-initialize Education Equipment like Projector, screen, etc...
- ❖ SMS Request by lecturer for Class Availability.
- ❖ Faculty Information Update via SMS Broadcasting.
- ❖ Student's exam results via SMS Broadcasting.
- ❖ Technical alerts/problems via SMS.
- ❖ Scheduled Reminder for lecturers & students.
- ❖ Security Alert & Scheduled Reminder for security officer.
- ❖ Lecturer's Broadcast SMS to update students for latest class changes or subject update.
- ❖ Stock Exchange Information for Business Study.
- ❖ Get weather update information via SMS request.



Should you require further information on the system design and setup, hardware requirement, cabling needed and costing, please contact Earnestcom via the email: sales@earnestcom.com



DESD Studio 2005 Security Management System

Monitor From Everywhere

DESD Studio 2005[®] software is a powerful and versatile application for many integrated system solutions. DESD Studio 2005 software provides an easiest, efficient and reliability solution which can help system integrators, engineers, technicians, lecturers and students automate their daily activities.



Figure 1.0: Overview of Security Management System

Figure 1.0 shows typical rooms like classroom, office, server rooms, etc which was installed with IP Camera and a door access system. The IP Camera and the door access devices are linked to the PC via a network. The DESD Studio 2005 Security Management Software was installed into the PC to provide total control and managed security for any of your promises.

DESD Studio 2005 Security Management System Features

Network Camera

- **View images virtually**
 - view images or watch video on virtually any Internet-enabled device.
- **Record to a Web Site or Hard Drive**
 - Built-in software records data to a web site through FTP.
 - You can use the same interface to record to the hard drive of a local computer.
- **Multiple Users**
 - Cameras can be viewed by up to 30 users at once.
- **Sensors Function**
 - Set the camera to record whenever an optional sensor is triggered by motion, sound, light or a timer.
- **Simple Ethernet Connection**
 - Cameras are attached through an Ethernet connection (or) router and power source.
 - Each camera has a built-in web server with IP Address.
- **Quality Video**
 - View up to 30 frames per second of live motion video with resolution of up to 640X480.

FingerTec Door Access

Easy to manage user for administrator.

- Add new enroll user and administrator
- Delete and edit enroll user
- Upload single or batch record to the Fingertec device
- Activate and deactivate user on specific Fingertec device.

Smoke detector / magnetic sensors

Motion Detector

Should you require further information on the system design and setup, hardware requirement, cabling needed and costing, please contact Earnestcom via the email: sales@earnestcom.com

Contact Us at:

Earnestcom Sdn. Bhd (678000-H)
57B, Jalan P/U 7/4, Bandar Puchong Utama,
47100 Puchong, Selangor Darul Ehsan,
MALAYSIA
Tel: 603-80607753 | Fax: 603-80613282
support@earnestcom.com | sales@earnestcom.com

Earnestcom reserved the rights to change and modify specifications without notice.