

Mechanical Socket

Product Instruction

Thanks for choosing this product .

We choose best quality phosphor copper, silver, exquisite design, good contact, effectively preventing the oxidation and select the thick phosphor copper with good elastic and feel smooth.

Special craftwork with the line and the screw, the screw head was spherical, the line will not be damaged .

Before using this product, pleas read this instruction carefully.

Attention

This product is up to the GB16915.1-1997, GB1002-96 GB2099.196 standard.

Please choose the suitable switch according to the instruction of the electric products, if necessary, ask the professional staff to install.

When installing or unloading, please cut off the power .

Please select the suitable electric products with Rated electric current, voltage to make sure that this product work well.

It will be damaged caused of short circuit or overload.

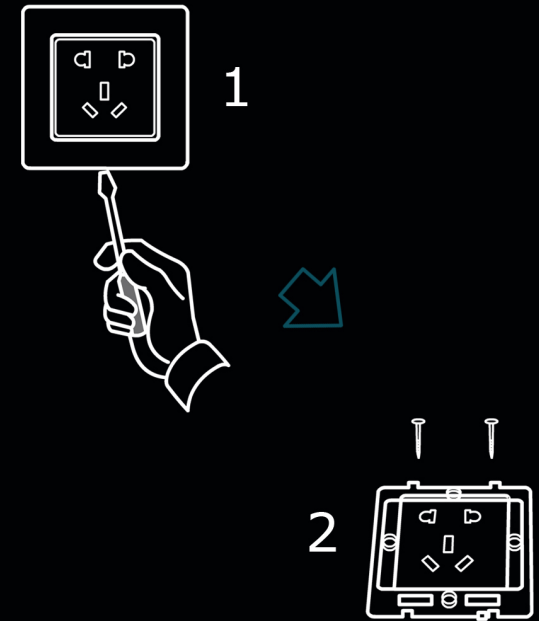
It is prohibited to be used in humid enviroment or more than 45 temperature.

It is prohibited that the tinder or other materials exsist inside of the box.



Installation

Socket installation



To open the cover by using the suitable tools. after connecting the wire, using the attached screw to fit the switch or socket on the line through the install eyelet.

Clasp the button together with the switch or clasp the cover together with the socket base

Installation

the connection of the switch: com is the phase input connection, L1, L2 are the output connect terminals.

the connection of the socket: L is the Phase connection .N is the Neutral line termination. E (↓) is the Terminals of earth .the earth wire must connect the earth termination of the building the building.