

CLIPSAL premisegateway™

Stay in control, from anywhere in the world

In its basic configuration, the Clipsal

PremiseGateway™ enables each of your control system to be monitored and controlled over the Internet. View status of your alarm system or view live video through CCTV cameras.

Using the Clipsal PremiseGateway™ is as simple as using an Internet browser.

A built-in firewall, network address translation and IP forwarding allow secure access to a range of systems including your PC network, lighting, air-conditioning, security and video surveillance. Connection via a standard browser is provided in all popular operating systems including Windows, Macintosh and Linux - which means you don't have to install or pay for any extra software.



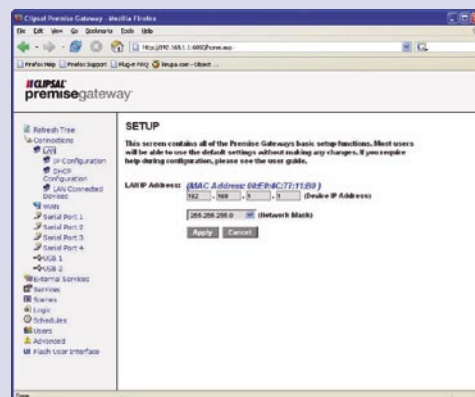
The PremiseGateway™ Landing Page



A list of user defined shortcuts



An example of direct device control



An example of the PremiseGateway™ Configuration Tools

Clipsal PremiseGateway™ Module

GENERAL SPECIFICATIONS

CPU Chipset	NS Geode GX1 300MHz x86 CPU Core Low power consumption, fanless operation
DRAM	64Mb SDRAM onboard
Dual Network Controller Chipset	10/100Mbps, auto switching Connector - Dual Stacked RJ45 with integrated Activity and Link LED Indicators

HIGH SPEED MULTIPLE INPUT OUTPUT

Serial Ports	2 x high-speed DB9 RS232/485 (jumperable)
USB	2 onboard USB1.1 connectors. OpenHCL compliant.
C-Bus Enabled	Onboard C-Bus RJ45 connectors enable direct connection to a C-Bus Network
Solid State Storage	128Mb Compact Flash

APPLICATIONS

Firewall	Network Address Translation Port Forwarding Port Management uPnP Internet Gateway Device Compliant
DHCP Server	On-board DHCP Server
Internet Connectivity	PPPoE Support DHCP Client Support Static IP Support Dynamic IP Resolution Client*
C-Bus Control	Lighting Control Appliance Control Scene Control
Security System Control	Clipsal MinderPRO Alarm System Control
Video Support	Retrieval and Forward of sequential JPEG Imaging through web-application provides support to a range of video-servers Full http-authentication support
Logic & Scheduling	Full cross-network Scheduler and Logic Engine Sunrise & Sunset support
Web-Control	Fully featured built-in Web application Remote Access & Control Features full SSL 128 bit encryption * when used in conjunction with Clipsal Portal service

TECHNICAL INFORMATION

Dimensions	160mm (W) x 50mm (H) x 120mm (D)
Operating Temperature	0°C to 40°C
Operating System	Linux
RAM	64MB onboard
Compact Flash	128MB



AUSTRALIA Clipsal Integrated Systems Pty Ltd Tel: +61 8 9400 0500 Fax: +61 8 8346 0845 cis@clipsal.com.au	HONG KONG Clipsal Integrated Systems (HK) Ltd Tel: +852 2487 0261 Fax: +852 2157 1328 marketing@clipsal.com.hk	INDONESIA PT Clipsal Graha Nusa Tel: +62 21 63016430 Fax: +62 21 631 6279 marketing@clipsal.co.id	MALAYSIA Clipsal Integrated Systems (M) Sdn Bhd Tel: +603 7665 3555 Fax: +603 7665 3155 info@clipsal.com.my	PAKISTAN Clipsal Pakistan (PVT) Ltd Tel: +92 21 506 7278 Fax: +92 21 506 3369 enquiry@clipsal.com.pk	SINGAPORE Clipsal Integrated Systems Pte Ltd Tel: +65 6415 3232/3233 Fax: +65 6415 3289 enquiry@clipsal.com.sg	TAIWAN Clipsal (Taiwan) Co Ltd Tel: +886 2 2538 3456 Fax: +886 2 2538 3000 clipsal@emirates.net.tw	UNITED ARAB EMIRATES Clipsal Middle East JPC Tel: +971 6 5570 777 Fax: +971 6 5570 757 clipsal@emirates.net.ae	VIETNAM Clipsal - VIETEC Co. Tel: +848 856 3002 Fax: +848 856 3006 salesdep@clipsalvietec.com.vn
CHINA Clipsal China Ltd Tel: +86 021 6350 0099 Fax: +86 021 6350 0055 sales@clipsal.com.cn	INDIA Schneider Electric India Pvt Ltd Tel: +91 11 5159 0000 Fax: +91 11 5167 8010 www.schneider-electric.co.in	KOREA Clipsal Korea Co Ltd Tel: +82 2 549 5550 Fax: +82 2 549 5201 admin@clipsal.co.kr	NEW ZEALAND Clipsal Industries (NZ) Limited Tel: +64 9 576 3403 Fax: +64 9 576 1015 headoffice@clipsal.co.nz	PHILIPPINES Clipsal Philippines Inc Tel: +632 683 0275-78 Fax: +632 683 0279 clipsal_phil@clipsal.com.ph	SOUTH AFRICA Clipsal South Africa (Pty) Ltd Tel: +27 11 314 5200 Fax: +27 11 314 5294 chris@clipsal.co.za	THAILAND Clipsal (Thailand) Co., Ltd Tel: +662 952 5338-42 Fax: +662 952 5337 clipsal@clipsal.th.com	UNITED KINGDOM Schneider Electric UK Tel: +44 870 608 8 608 Fax: +44 870 608 8 606 7-85_ukinfo@schneider-electric.com	

Clipsal Integrated Systems (M) Sdn Bhd reserves the right to change specifications or designs described in this document without notice and without obligation.
© 2005 Clipsal Integrated Systems (M) Sdn Bhd

www.clipsal.com/cis
www.cisasia.com.my



Lighting & Power Control

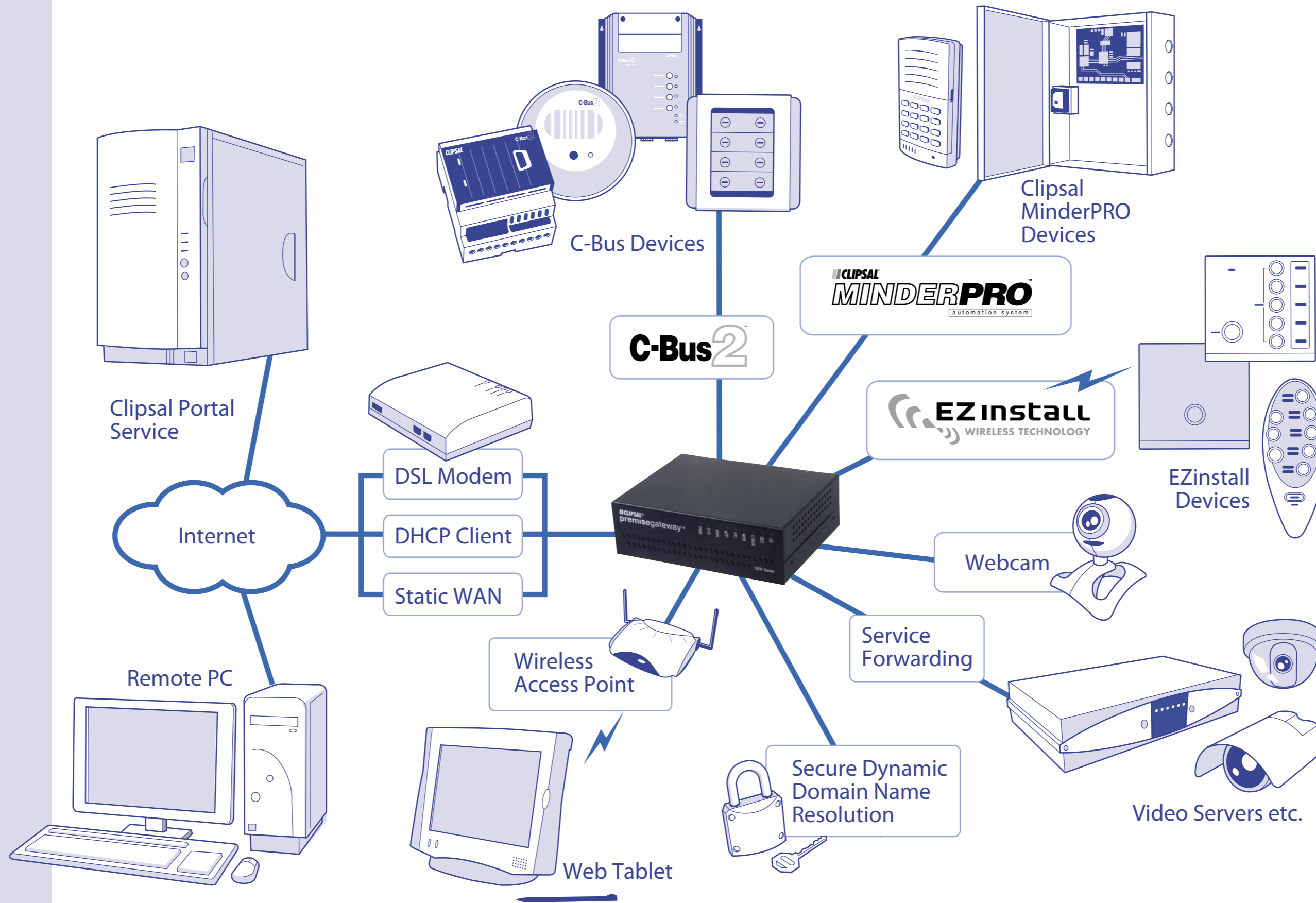
Clipsal PremiseGateway™ allows remote switching and dimming of lighting including both fluorescent and incandescent loads simply by pointing and clicking in a web page. You can even open your curtains, switch your pool filter or sprinkler system to water the garden. Power circuits controlling pumps, motors hot water systems etc. can be remotely switched.

Scheduling

Clipsal PremiseGateway™ provides a simple user interface enabling you to easily set-up and maintain complex schedules. The Clipsal PremiseGateway™ is capable of controlling circuits up to 365 days ahead.

Video Servers/Port Forwarding

The Clipsal PremiseGateway™ provides support for video server services by including a Port Forwarding Service. This service enables the owner to forward services from the LAN Interface of the Clipsal PremiseGateway™ to the outside world. When used in conjunction with the SSL Encapsulation services, the Clipsal PremiseGateway™ provides a very flexible and secure method of extending the facilities and services of the Clipsal PremiseGateway™.



Premise Automation & Security Panel Management

Clipsal PremiseGateway™ provides full management and monitoring of a range of Clipsal MinderPRO and CentralAXS systems. This enables remote monitoring of Alarm States as well as providing the ability of being able to remotely arm the system.

Internet Enabled

Connectivity. Clipsal PremiseGateway™ provides full internet connectivity. With support for PPPoE, DHCP and Dial-up connections (via optional modem module), the Clipsal PremiseGateway™ is compatible with most ADSL/xDSL services and modems.

Security. With full support for 128-bit SSL, you can be sure your data transmission is protected.

Firewall. By implementing dual Ethernet Interfaces, you can enable stateful IP tables to ensure that your devices are protected.

IP Resolution. By connecting through the Clipsal Portal, it is possible to provide connectivity to all types of DSL and even dial-up connections at a fraction of the cost of a fixed IP Address.