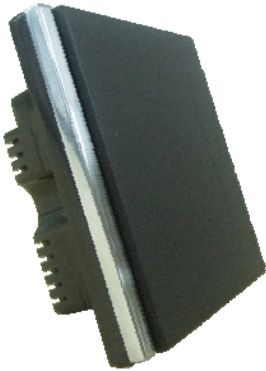


Concept: WUS Automation
Category:

Dimmer Smart Switch Series



Description

Dimmer Smart Switch Series

Dimmer Smart Switches Series is one of the smart switch series. Dimmer Smart Switches Series can replace traditional illuminating switches. They are the best choice for your modern Smart Home.

Available Accessories

-

Page Related To

Model #	HDL Part #

Features	Specifications
<p>A. Wireless Control: Can use Remote Controller to control lighting's ON/OFF.</p> <p>B. Remote Control: Can be controlled by Internet or telephone by Touch Panel or Telephone Controller.</p> <p>C. Dimmer Function: Incandescence light or spot-light can be controlled for dimming .The switch will save the status and return to the brightness next time the switch is turned on.</p> <p>D. Unilateral Brightness Adjustment: Brightness will be changed unilaterally when you press the switch key. In case to adjust brightness in opposite, release the switch and hold the switch key to adjust.</p> <p>E. Luminous Indication: Indicate the location of switches in darkness.</p>	<p>Working Voltage: AC180-250V</p> <p>Dimmer way: 25-800W(one key) 40-800W(two key) 60-800W(three key)</p> <p>Non-dimmer way: 5-1100W(per key)</p> <p>Working Temperature: 0-50°C</p> <p>Working Humidity: <=90%RH</p> <p>Receiving Sensitivity: -105dBm</p> <p>Receiving Frequency: 433.92MHz</p> <p>Load Type: Incandescence light/Spot light</p>

Applications	Dimensions

Brief Specification

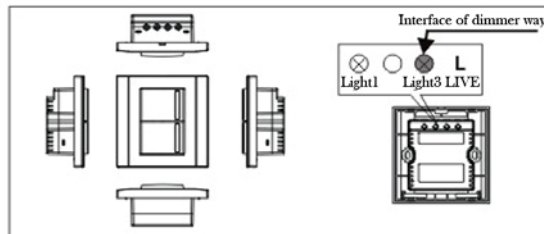
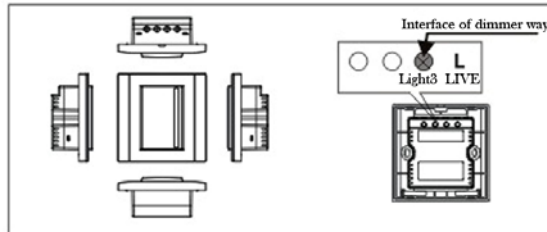
Required With	Pre-Requisite

Wiring Instruction

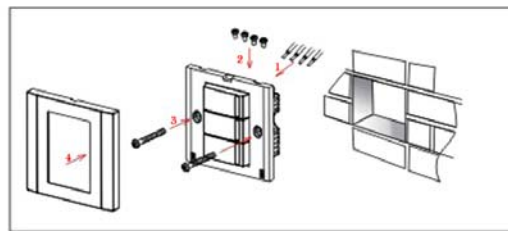
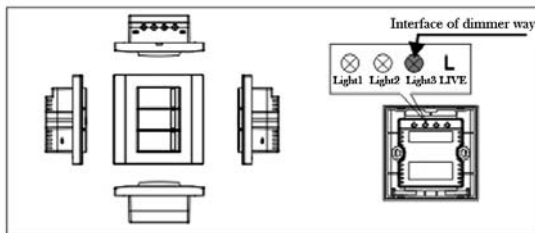
Transceiver	Model #	HDL Part #

Product Details and Sizes

Product Illustration & Cabling



Installation



Instruction

1) Manual Control

Graphics File

Net Weight

Box Size

Gross Weight

Connection Diagram