

Matrix System



Model: SH-562

Part #: D-Max DMX25632

Features

- I/O Card Slot 16EA
- Network Card Slot 1EA
- Keyboard Interface
- RS232 In Interface
- CCTV Receiver Control Interface
- Alarm Interface
- Network Interface
- 256By 32 Video Matrix Control
- Video Input Bay Unit Connection (Max 3Set_)
- 256 CCTV Receiver Control
- 8 Sub Keyboard Control Port
- Network Matrix Camera

Specifications

Display:.....
 Data/Time Display
 Alarm, Status Display
 Camera Input: 64EA(BNC)
 Monitor Output: 32(BNC)
 Data Backup: Date, Time, I/D
 Communication:
 CCTV Receiver-9600, N, 8, 1
 Sub Keyboard-9600, N, 8, 1
 RS-232C-9600, N, 8, 1
 ARU-1200, E, 8, 1
 Power Consumption:
 Power Supply 220V 350W
 Operating Condition: 0°C~+40°C

Dimensions

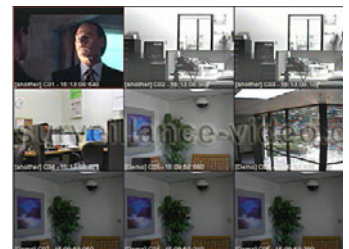
Size: 430W x 265H x 350D (mm)
 Weight:10Kg

Snapshots

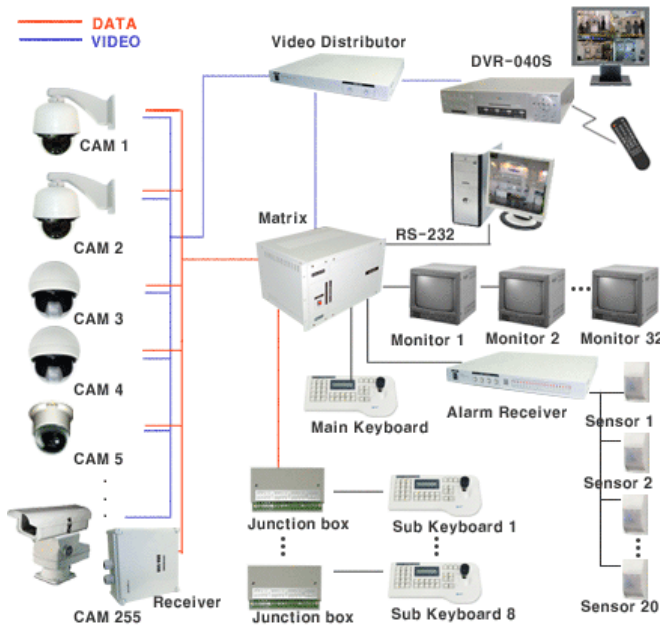
4 Channels



9 Channels



Connection Diagram



- Applications:**
- Camera Security for Luxury Homes
 - CCTV Security at Luxury Offices
 - Hotel Security and Surveillance
 - Smart School Supervision and Observation