



product guide 2005

Introducing...





Automation Simplified...



Dear Customers: Since 1985, HAI has been building home automation systems coordinating security, temperature and lighting for comfort, convenience and safety. HAI's Omni products are now North America's Best Selling home automation systems, serviced and supported by a nationwide dealer and distribution network. For 2005, we proudly bring you three major new innovations:

1. HAI Lighting Control, which is based on UPB technology, is easy to install, use and has the reliability required for professional installations. HAI Lumina Central Lighting and Control systems provide elegant lighting control for comfort and convenience.
2. Home Control for Windows Media Center integrates Omni controllers with this year's most exciting entertainment platform for digital media, Microsoft's Windows XP Media Center Edition.
3. Integration with two of the finest Distributed Media systems, NuVo and Russound, allow you to offer customers a comprehensive home automation and entertainment system at a very reasonable price.

As always, we work to offer the very best price/performance ratio in our products. Our continuing goal is to delight you and your customers with the best products, service and ease of use—time and time again. We greatly appreciate your business and loyalty. We'll work hard to earn it and to keep it.

~Jay McLellan, President



HAI Catalog

HAI—Comfort, Convenience and Safety.....	2	HAI Wireless Security Products	15
HAI Omni Controllers	3	HAI Lighting Control.....	16
HAI Omni Controller Features	4	HAI Lighting Control & Lumina Controllers.....	17
HAI Omni Controllers—Reliability & Approvals....	5	HAI Software	18
Omni LT & Omni LT Kits	6	Marketing Brochures	19
Omni II & OmniPro II	7	Documentation.....	20
Omni II & OmniPro II Promo Kits	8	Connectivity Partners & HAI Programs.....	21
Consoles & Touchscreens	9	HAI—Free Trainings.....	22
Accessories.....	10-12	Wiring Diagrams	23-25
More Accessories & ALC Lighting	13	Product Index by Part Number/Category	26-27
HAI Omnistats	14	Notes.....	28



HAI—Comfort, Convenience, and Safety



Since 1985, HAI has been the recognized leader of integrated security and home automation products. Considered a pioneer in the industry, HAI offers a comprehensive and award-winning product line with a track record of success.

We feel that HAI has increased our business and our standing in the community. Your service and support is second to none...You are a supplier that makes our company look good."

T. Michael Weed IV, President
M&M Direct Communications, Inc.
Holland, MI

"HAI offers innovative products and great tech support - in short, you guys rock!"

Nick Tamburri, President
Aggressive Automation
Newark, NJ

"The HAI systems are integral in all of our jobs acting as the heartbeat and central core unit. We have found that most customers will start out with an Omni and grow their systems around it once they see the ease of use."

Michael Rutland , Owner
Systems by Design
Spicewood, TX

"We are dedicated HAI installers that have not done an install without using an OmniPro II. We respect HAI tremendously and sing your praises every day."

Gary Hoefler, Owner
Home Technology Plus
Eads, TN

"HAI continues to roll with the changing market place and we have the confidence to know that these new panels and systems have been well thought and engineered before we install them. Support for your equipment is excellent."

John Reider, President
IntelliPower, Inc.
Kirkwood, MO



HAI Controllers

An HAI Omni family controller provides temperature and lighting control for energy savings, integrated UL listed security for enhanced safety, and the convenience of telephone and internet access and control.

HAI Models	Omni LT	Omni II	Omni Pro II	HAI Models	Omni LT	Omni II	Omni Pro II
Thermostats	2	4	64	Custom Vocabulary	na	na	yes
Consoles (keypads)	4	8	16	RS 232 ports	1	1	3
Touch Screens***	3*	7**	15**	RS 232 expansion total	2	2	4
Zones	8	16	16	Ethernet port	0	0	1
Zone Expansion total	24	48	176	Format	Contact ID, 4/2, 3/1		
2 wire smoke loops	1	4	4	Transformer required	16.5V	24V	24V
12 volt triggers	2	8	8		40VA	40VA	40VA
Expansion triggers total	10	8	136	Battery (typical)	12V	12V	12V
User Codes	8	16	99		4 Ah	7 Ah	7 Ah
Lighting Scenes	16	64	128	Aux current max	500 mA	1 A	1 A
Lighting Addresses	16	64	256	Bell current max	1 A	1 A	1 A
HAI Lighting/Rooms	2	8	31	Aux current (UL 24 hr)	200 mA	250 mA	250 mA
Programming Lines	100	500	1500	Bell current (UL 24 hr.)	350 mA	300 mA	300 mA
Vocabulary	200	255	650				

* Recommend 12VDC power supply for 2 or more touchscreens

** Recommend 17A00-1 Expansion or 12VDC power supply for 4 or more touchscreens

*** Systems must have 1 console. Each Touchscreen uses 1 console address.

What is the cost?

All HAI products are designed with affordability in mind. An approximate retail cost is \$1.00 to \$2.00 per sq. ft. Contact your HAI distribution partner for dealer costs. Homeowners recognize that, for not much more than a standard security system, the cost of a system can be recouped through energy savings while increasing the value and enjoyment of their home.

How complicated is this?

HAI recognizes that simplicity is the key. In addition to being easy to operate for homeowners, HAI has simplified the installation process for dealers. HAI systems can be easily retrofitted into existing homes and do not require special wiring.

HAI provides toll-free technical support, and access to a dealer-only website loaded with technical information, application notes, sales tools, consumer leads, and dealer support programs.

HAI Omni Controller Features

All HAI Omni controllers have the following basic features. For more details please visit our website at www.homeauto.com or contact your HAI representative.

Overall Features

- Central control for security, lighting and temperature
- English menus on LCD consoles and OmniTouch touchscreen
- Built-in telephone access with voice menus
- Built-in modem for remote programming and status
- Built-in serial port
- Built-in Ethernet port (*OmniPro II*)



Security Features

- UL-Listed Burglary and Fire
- Fully configurable security zones, expandable
- Wireless Security Options
- Supports 2 and 4 wire smoke detectors
- Supervised zones, battery and bell circuits
- Digital communicator with contact ID
- Voice and pager dialer
- True partitioning for security and control (*Omni II and OmniPro II*)
- Event log with time and date



Security Features (continued)

- User codes valid by time and authority
- Trouble conditions indicated in English

Automation Features

- Advanced Control Programming (ACP): HAI's easy-to-use "when-command-if" programming for scheduling and event-driven logic
- Advanced control for lighting: scenes, levels, fades, dimming, occupancy-based
- Remote control of thermostats, lighting, security
- Program on console, touchscreen or PC using HAI PC Access software
- Lights, temperatures, security modes and control outputs can be scheduled by time, sunrise, sunset, and date or day of week, as well as by system event: motion detected, door opened, mode change, etc.



HAI Omni Controllers—Reliability

- Designed for continuous trouble-free operation and extreme resistance to false alarms
- Verifies smoke detectors by cycling power and confirming alarm
- System reads resistance of each zone independently to detect trouble due to a faulty sensor or wiring to prevent false alarms
- Pulse count feature precludes false alarms due to static, transients and lightning
- Programmable delay to preclude false alarms by user error
- All inputs and outputs protected against static, RFI, surges, and lightning by use of impedance limits, spark gaps, TRANZORB surge arrestors, RC filters, MOVs, bypass capacitors and ground shields
- Watchdog timer, non volatile EEPROM storage for ALL programs, self-diagnostic software, low voltage cut out, self-protecting power supply for system integrity
- CP-01 False alarm reduction standard compliant

Approvals

UL Commercial Burglary (OmniPro II and Omni II Only)

UL Residential Fire and Burglary

FCC Part 15J, Part 68

California State Fire Marshall

CE (European Standard)

IS-60 (Canada)



HAI is an Energy Star Partner and all Omnistats meet the Environmental Protection Agency's Energy Star Guidelines for energy efficiency.

Omni LT & Omni LT Kits



Omni LT Controller **21A00-1**
Omni LT controller with enclosure, RJ31X jack and cable, manuals, accessory kit.



21A00-2

Omni LT Board Only **21A00-2**
Omni LT controller board only.



21A00-11

Omni LT for Structured Wiring Enclosures **21A00-11**
Omni LT controller on mounting plate, powerline transceiver, RJ31X jack and cable, manuals, accessory kit, and wiring label for enclosure door. Fits in Leviton and "Open House" type enclosures.

Promo 10, Omni LT for Structured Wiring Enclosures



Omni LT w/ Surface Console Case Of 6 **Promo 9**
Promo 9CS
Omni LT controller in enclosure.*



Omni LT for Structured Wiring Enclosures Case Of 6 **Promo 9S**
Promo 9SCS
Omni LT Controller on Backplate for Leviton and Open House enclosures.*

Omni LT Kit **Promo 10**
Omni LT controller in enclosure, powerline transceiver, RC-80B thermostat, indoor/outdoor temperature sensor, serial cable.*

Omni LT Kit for Structured Wiring Enclosures **Promo 10S**
Omni LT controller on mounting plate, powerline transceiver, RC-80B thermostat, indoor/outdoor temperature sensor, serial cable.*

Omni LT Starter Kit **Promo 11**
Omni LT controller in enclosure, 1105W Dealer Software, powerline transceiver, lock & keys, serial cable, sample home control programs.*

***All Omni LT Promos** come with surface mount console, RJ31X jack & cable, manuals, and accessory kit in addition to items listed in above description.

Omni II & OmniPro II

Omni II
AUTOMATION

OmniPro II
AUTOMATION



OmniPro II's ship with
HAI Lighting Control
Interface (UPB-PIM)



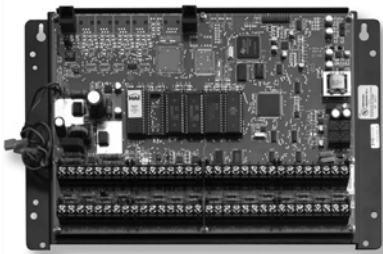
Omni II Controller 20A00-1
Omni II controller with enclosure, lock set with two keys, two way X-10 transceiver, RJ31X cord and jack, manuals.

Omni II Commercial Controller 20A00-4
Omni II controller with commercial attack proof enclosure, lock set with two keys, two way X-10 transceiver, RJ31X cord and jack, manuals.



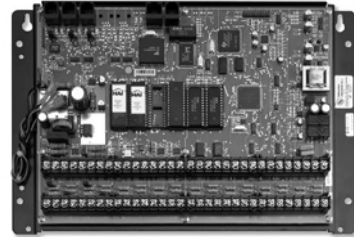
OmniPro II Controller 20A00-2
OmniPro II controller with enclosure, lock set with two keys, PIM, RJ31X cord and jack, manuals.

OmniPro II Commercial Controller 20A00-5
OmniPro II controller with commercial attack proof enclosure, lock set with two keys, PIM, RJ31X cord and jack, manuals.



Omni II Controller for Structured Wiring Enclosures 20A00-7
Omni II controller on mounting plate for Leviton, OnQ, UStec, and "open house" type enclosures, two way X-10 transceiver, RJ31X cord and jack, manuals, accessory kit, wiring diagram for enclosure door.

Omni II Board Only 20A00-11
Omni II controller board only.



OmniPro II Controller for Structured Wiring Enclosures 20A00-8
OmniPro II controller on mounting plate for Leviton, OnQ, UStec, and "open house" type enclosures, PIM, RJ31X cord and jack, manuals, accessory kit, wiring diagram for enclosure door.

OmniPro II Board Only 20A00-21
OmniPro II controller board only.

Omni II & OmniPro II Promo Kits

Omni II
AUTOMATION

OmniPro II
AUTOMATION



Promo 12S

Omni II Kit w/ Flush Console Promo 12

Omni II controller with enclosure, lock set with two keys.*

Omni II for Structured

Wiring Kit with Flush Console Promo 12S

Omni II controller on a structured wiring backplate.*

Omni II Starter Kit Promo 14

Omni II controller with enclosure, lock set with two keys, 1105W Dealer Software.*

* **All Omni II Promos** come with surface mount console, flush mount kit, RC-80B thermostat, indoor/outdoor temperature sensor, powerline transceiver, RJ31X cord and jack, serial cable, and manuals in addition to items listed in above description.



OmniPro II's ship with HAI Lighting Control Interface (UPB-PIM)



Promo 15S

OmniPro II Kit w/ Flush Console Promo 15

OmniPro II controller with enclosure, 10A06-1 expander, lock set with two keys.*

OmniPro II for Structured

Wiring Kit with Flush Console Promo 15S

OmniPro II controller on a structured wiring backplate, 10A06-1 expander.*

OmniPro II Starter Kit Promo 16

OmniPro II controller with enclosure, lock set with two keys, 1105W Dealer Software.*

* **All OmniPro II Promos** come with surface mount console, flush mount kit, RC-80B thermostat, indoor/outdoor temperature sensor, UPB-PIM, RJ31X cord and jack, serial cable, and manuals in addition to items listed in above description.

Consoles & Touchscreens

All products on this page will work with any HAI Controller



Omni Console **33A00-1**
Case of 12 **33A00-1CS**
 Cool blue LCD surface mount console, silk screen front, connector kit, instructions.



*console not included

Omni Console Flush Mount Kit **33A00-3**
 White, Flush Mount Backbox for use with 33A00-1 or 33A00-4 console (*not included*), mounting bracket, instructions.



Omni Console with Built-in Speaker/Microphone **33A00-4**



HAI OmniTouch

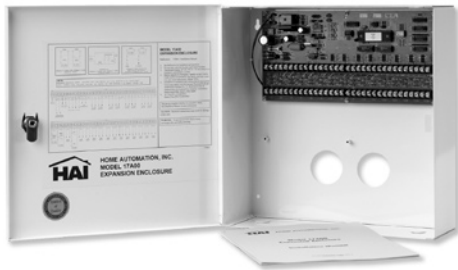
The OmniTouch provides a fun and affordable interface for the award-winning Omni Family systems. Customers can enjoy the one touch control of security, temperature, lighting, audio, and other home control functions.

Dealers find the OmniTouch easy to install and sell, since it doesn't require any programming—they configure themselves. True "plug and play."

HAI OmniTouch **32A00-1**
 Color touchscreen in flush mount enclosure, includes white, beige, and almond faceplates, connector kit, instructions.

HAI OmniTouch Trim Ring **32A07-1**
 White trim ring—intended for retrofitting OmniTouch in place of 11A00-2 Flush Console. White, paintable to wall color.

Accessories



Expansion Enclosure 17A00-1

16 input/16 output expansion board with enclosure, lock set with two keys, accessory kit, instructions. Contains separate power supply and reduces wiring use in larger installations *(for OmniPro II)*.

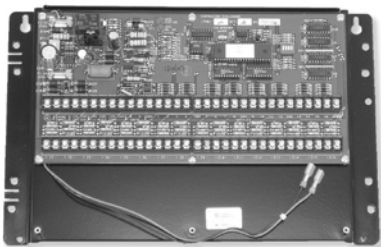
Expansion Board Only 17A00-8

16 input/16 output expansion board only *(OmniPro II)*.



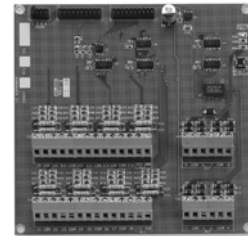
Enclosure Lock & 2 Keys 21A06-1

Lock for Omni LT enclosure, two keys.



16 Zone/16 Output Expansion 17A00-9

16 input/16 output expansion board on a universal mounting plate with accessory kit, instructions for installation in Leviton, UStec, OnQ and "open house" type structured wiring enclosures *(OmniPro II)*.



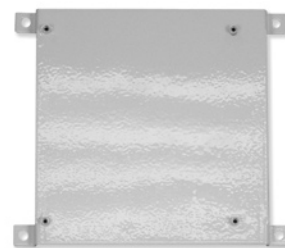
Omni LT Expansion Module 22A00-1

16 zones plus 8 voltage output expansion module with accessory kit *(for Omni LT only)*.



16 Zone Hardwire Expander 10A06-1

16 Zone expansion module with accessory kit *(for Omni II and OmniPro II)*.



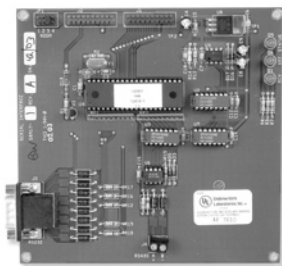
Mounting Plate for Omni LT 21A07-2

Mounting plate hardware kit & instructions. Used to mount Omni LT controllers in Leviton and "open house" type structured wiring enclosures.



**Universal Mounting Plate
for Omni II/OmniPro II 20A07-2**

Mounting plate, hardware kit & instructions. Used to mount Omni family controllers, expanders, and accessories in Leviton, OnQ, UStec, and "open house" type structured wiring enclosures.



RS-232/RS-485 Serial Board 10A17-1

RS-232/485 serial board, accessory kit, 20 pin cable, instructions. *(for Omni LT, Omni II and OmniPro II).*

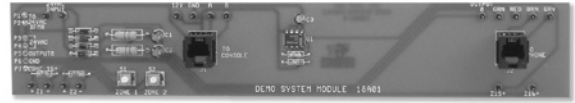


Relay Module 10A07-1

4 relay module with mounting tape *(for Omni LT Omni II and OmniPro II).*

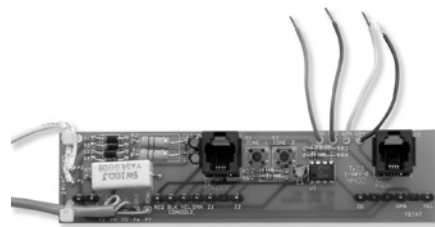
Relay Module 19A00-1

8 relay module with accessory kit, mounts in 17A00 Expansion Enclosure.



Demo Adapter Kit 18A00-5

Demo adapter board, instructions *(for Omni II and OmniPro II).*



Omni LT Demo Adapter Kit 27A00-2

Demo adapter board *(for Omni LT only).*



Chip Upgrades

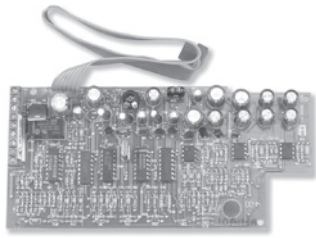
EPROM chip upgrade with installation instructions *(for the latest version).*

Omni LT Chip Upgrade 21A03-1UPG

Omni II Chip Upgrade 20A04-1UPG

OmniPro II Chip Upgrade 20A04-2UPG

More Accessories



Two-Way Voice Module 10A11-1

Two way voice board, mounting material, instructions. Use with 33A00-4 console or speaker microphone shown below (*Omni LT, Omni II, and OmniPro II*).



28A00-1

28A00-2

Surface Speaker Microphone 28A00-1

Speaker and microphone, surface mount enclosure, instructions (*Omni LT, Omni II, and OmniPro II*).

Flush Speaker Microphone 28A00-2

Speaker and microphone, flush mount enclosure, instructions (*Omni LT, Omni II, and OmniPro II*).



PESM

Programmable energy saver module with instructions. (*Omni LT, Omni II and OmniPro II*).

1101A

Wireless Receiver for

GE InterLogix 42A00-1

64 Zone wireless receiver, with LED display for GE/ITI/Caddx transmitters (*Omni LT, Omni II, and OmniPro II*).



Water Temperature Sensor 14A00-8

Water temperature sensor module, probe, accessories, instructions (*Omni LT, Omni II, and OmniPro II*).



Indoor/Outdoor

Temperature Sensor

31A00-1

Indoor/outdoor temperature sensor, accessory kit, instruction sheet (*Omni LT, Omni II, and OmniPro II*).

Indoor/Outdoor Temperature & Humidity Sensor

31A00-2

Indoor/outdoor temperature and humidity sensor, accessory kit, instruction sheet (*Omni LT, Omni II, and OmniPro II*).

Extended Range Indoor/Outdoor Temperature Sensor

31A00-7

Indoor/Outdoor temperature sensor from -40° to 120° F, accessory kit, instruction sheet (*Omni LT, Omni II, and OmniPro II*).

Extended Range Indoor/Outdoor Temperature & Humidity Sensor

31A00-8

Indoor/Outdoor temperature sensor from -40° to 120° F and humidity sensor, accessory kit, instruction sheet (*Omni LT, Omni II, and OmniPro II*).

More Accessories & ALC Lighting



Serial Cable **21A05-2**
7 foot cable, modular to DB-9F connects Omni LT, Omni II/OmniPro II serial port to computer RS-232.



Omni LT Demo Kit **27A00-3**
Fully assembled and operational Omni LT demo system including controller, RC-80B thermostat, LCD console, demo board adapter kit, X-10 powerline transceiver, serial cable, touch tone phone packaged in robust black travel case. Demo programs included.



OmniPro II Demo w/ OmniTouch and HAI Lighting Control **18A00-13**
Fully assembled & operational OmniPro II demo system including controller, RC-80B thermostat, LCD console with built-in speaker, OmniTouch touchscreen, HAI Lighting Control: House Controller, Room Controller, and Dimmer, UPB PIM, Voice Module, packaged in super duty black travel case. Demo programs included.



X-10 Kits
Two way X-10 transceiver, 25' phone line with connectors and adapter to use two X-10 transmitters for more signal strength (*Omni LT, Omni II, and OmniPro II*).

- Dual X-10 Transmitter Kit** **10A09-1**
- Split X-10 Signal Kit** **10A09-2**
- Two Way X-10 Transceiver Kit** **10A09-7**

ALC Interface, 1 branch **25A00-1**
1 branch ALC Hardwire Lighting Control Interface (*Omni LT, Omni II, OmniPro II*) (16-31 lights).

ALC Interface, 4 branch **25A00-2**
4 branch ALC Hardwire Lighting Control Interface (*Omni II, OmniPro II*) (64-124 Lights).

ALC Relay Switch, White **363142-11**
ALC Relay Switch, Ivory **363142-12**

ALC 600W Dimmer, White **363143-11**
ALC 600W Dimmer, Ivory **363143-12**

ALC Program Switch, White **363144-11**
ALC Program Switch, Ivory **363144-12**

ALC Auxiliary Switch, White **363145-11**
ALC Auxiliary Switch, Ivory **363145-12**

ALC 900W Dimmer, White **364335-11**
ALC 900W Dimmer, Ivory **364335-12**

ALC Cluster Switch, White **364355-11**
ALC Cluster Switch, Ivory **364355-12**

ALC Enhanced Branch Hub **364736-01**

HAI Omnistats

All products on this page will work with any HAI Omni Family Controller.



RC-80B
RC-90B
RC-122B

RC-100B
RC-112B

Single Stage Heat/Cool RC-80B
Single stage (1 heat/1 cool) thermostat with lighted LCD, accessory kit, manuals.

Single Stage Heat/Cool for Zoned Systems RC-90B
Single stage (1 heat/1 cool, with B & O Terminals) for zoned systems thermostat with lighted LCD, accessory kit, manuals.

Two Stage Heat/Cool RC-122B
Two stage thermostat (2 heat/2 cool) with lighted LCD, accessory kit, manuals.

Heat Pump RC-100B
Heat pump thermostat, (2 heat, 1 cool) with lighted LCD, accessory kit, manuals.

Two Speed Heat Pump RC-112B
Two speed heat pump thermostat (3 heat/2 cool) with lighted LCD, accessory kit, manuals.



Serial Cable RC-201
9 ft serial cable, nine-pin DB-9 serial to four-pin HAI Omnistat connector. Used to connect RC- series thermostats to PC (Not required for Omni family controllers).

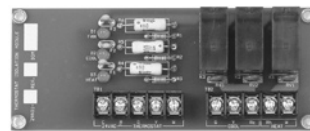


23A00-1

23A00-2

Surface Mount Remote Indoor Temp Sensor 23A00-1
Surface indoor temperature sensor for Omnistat thermostats.

Flush Mount Remote Indoor Temp Sensor 23A00-2
Flush indoor temperature sensor for Omnistat thermostats.



29A00-1



30A00-1

Thermostat Isolation Module 29A00-1
Relay isolation module for RC-80 series thermostats, mounting clips, instructions (*Optional, may be needed for HVAC systems using non-standard voltages*).

Thermostat Power Supply Module 30A00-1
Power booster for RC-80 series thermostats, instructions (*Optional, may be needed in retrofit applications when "HVAC common" wire is not available*).

HAI Wireless Security Products*

*All products on this page will work with any HAI Omni or Lumina Controller



NEW!



64 Zone Wireless Receiver 45A00-1

433 MHz for use in domestic and international installations.



NEW!

4 Button Keyfob 48A00-1

Can be programmed to control any HAI Controller feature, such as lights, temperatures, and macros, in addition to security.

NEW!



Door/Window Transmitter 46A00-1

3 Zone Door/Window Transmitter that includes a mercury tilt switch for garage doors.



NEW!

Summer 2005

Smoke and Carbon Monoxide

Detector w/ Voice Alarm 49A00-1

Smoke and Carbon Monoxide Detector with Voice Alarm for added safety.

NEW!



Quad Pet Immune Motion Detector 47A00-1

Quad Pet Immune Motion Detector that greatly reduces false alarms.



NEW!

Panic/Alert Pendant 50A00-1

Can trigger outgoing phone calls up to 8 different numbers, an e-mail notification, or video surveillance recording.

HAI Lighting Control



Room Controller 600W Dimmer House Controller

A new series of lighting control products that deliver high performance at an affordable price.

HAI Lighting Control products can be used as stand alone, with HAI controllers or with other controllers that are UPB compatible. They use standard wiring techniques for easy retrofit.



HAI Lighting Control uses UPB, an ultra reliable digital communication technology.

600W Dimmer 35A00-1

Case of 12 35A00-1CS

600 Watt UPB Dimmer, white paddle, connectors, instructions.



1000W Dimmer 35A00-2

Case of 12 35A00-2CS

Summer 2005 1000 Watt UPB Dimmer, white paddle, connectors, instructions.

600W Non-Dimming Switch 35A00-3

Case of 12 35A00-3CS

600 Watt UPB Switch, Non-Dimming for compact/ fluorescent, white paddle, connectors, instructions.



1000W Non-Dimming Switch 35A00-4

Case of 12 35A00-4CS

Summer 2005 1000 Watt UPB Switch, Non-Dimming for compact/ fluorescent, white paddle, connectors, instructions.

15A Relay Switch 40A00-1

Case of 12 40A00-1CS

15A UPB Relay Switch for motors, fans. White paddle, connectors, instructions.

Room Controller, 6 button 38A00-1

Case of 12 38A00-1CS

Room Controller, white 6 button UPB with blue LED indicators, connectors, instructions.

House Controller, 8 button 38A00-2

Case of 12 38A00-2CS

House Controller, white 8 button UPB with blue LED indicators, connectors, instructions.

Phase Coupler 39A00-1

Case of 12 39A00-1CS

Phase coupler, UPB for 120/240 V electrical systems.

PIM & Cable 36A00-1

Case of 12 36A00-1CS

Powerline Interface Module (PIM) UPB, cable for Omni LT, Omni II, & OmniPro II serial ports, instructions.

PIM to PC Cable & Connector 36A05-2

Cable and DB-9 connector to connect 36A00-1 PIM to PC serial port for use with HAI UPStart custom configuration software.

HAI Lighting Control & Lumina Controllers

HLC Expansion Kit for

Omni LT, Omni II **36A10-1**
Serial interface, cable and PIM to add HLC to Omni LT or Omni II.

Auxiliary Switch **37A00-1**
Case of 12 **37A00-1CS**

White Auxiliary Switch for remote operation of 35A00 and 40A00 dimmers and switches; connectors, instructions.



Switch Color Change Kits (sold in case lots of 12 only)

Available Colors, color codes

White	WH	Ivory	IV
Almond	AL	Brown	BR
Black	BL	Grey	GR

Switch Color

Change Kit **35A14-color code**
Paddle, bezel assembly for 35A00, 37A00 and 40A00 series switches.

Room Controller Color

Change Kit **38A04-color code**
Bezel for 38A00-1, instructions.

House Controller Color

Change Kit **38A05-color code**
Bezel for 38A00-2, instructions.

Custom Legend Kit

For Room or House Controller **38A06-2**
Coupon & instructions for custom laser engraved buttons for 6 button Room Controller or 8 button House Controller. Mail in coupon, receive by mail.



Spring 2005

Lumina Controllers

- Central Lighting & Control System
- UL Listed for energy management
- Designed for HAI Lighting Control products with additional support for X-10, ALC, RadioRA and others
- Lumina provides scheduling, sunrise/sunset, occupancy control, macros & scenes, telephone access, thermostat control and more
- Supports all Omni II & OmniPro II accessories, including Weblink II for Internet control and Home Control for Windows Media Center

Lumina **44A00-1**

Supports eight rooms (56 lights). Controller in enclosure with lock & keys, LCD console, UPB-PIM & cable, UPB phase coupler, serial cable, serial expander, set-up software, manuals, and accessories.

Lumina Pro **44A00-2**

Supports 31 rooms (217 lights). Includes ethernet port, controller in enclosure with lock & keys, LCD console, UPB-PIM & cable, UPB phase coupler, serial cable, set-up software, manuals, and accessories.

HAI Software

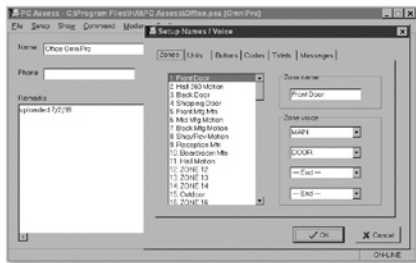


HAIweb-link II

With Web-Link II software, you can access and control your Omni System on the internet, check on your house with video surveillance, verify the kids have arrived home with e-mail notification, or disarm the security system for an arriving guest. Web-Link II makes it easy to stay connected to home and family!

HAI Web-Link II Software 1108

For Windows. Software must be registered for HAI Support.



Software for Windows

Software must be registered for HAI Support.

HAI Dealer Software 1105W

HAI End User Software 1106W



"HAI makes changing lighting, temperature, and security as easy as changing channels!"

Home Control for Windows Media Center 1109

Home Control for WMC is software for Windows Media Centers that allows control of all HAI Omni controller features from the comfort of an easy chair using a single media center remote.



A Windows Media Center coordinates music, television, and home photography for an enjoyable home entertainment experience.

HAI's Home Control coordinates security, temperature, and lighting for comfort, convenience and safety. *Together*, you get incredible performance in a complete home automation system at a very reasonable price.

Marketing Brochures*

* brochures available from HAI distributor or download from www.homeauto.com



Automation Simplified TriFold
Pack of 100, Full Color Trifold Brochure.



HAI Lighting Control TriFold
Pack of 100, Full Color Trifold Brochure.



Home Control TriFold for WMC
Pack of 100, Full Color Trifold Brochure.

Coming soon...



Documentation*

* order from your HAI distributor or download for free from www.homeauto.com



Model Home Displays SA-23

Merchandising kit to show features of Omni systems in model homes, Full-Color.



Home Automation FAQ SA-28

Full-Color Home Automation FAQ sheet. Two-Sided, pack of 100.



Training CD TRAINCD

This CD contains HAI's Automation Simplified training and other sales power point presentations, marketing videos, all tech sheets, application directory, etc.



Detailed Spec Sheets

Available on the web at www.homeauto.com.



Omni LT Manuals OMNILT-MS

Owner's/Installation manuals.

Omni II Manuals OMNII-MS

Owner's/Installation manuals.

OmniPro II Manuals OMNIPROII-MS

Owner's/Installation manuals.

Connectivity Partners



HAI has developed and continues to develop relationships with other manufacturers in the industry to integrate our products with theirs. Doing so allows flexibility for the homeowner to add and upgrade products as desired while offering additional revenue for installers.

Please visit our website at www.homeauto.com for updated and detailed information on HAI connectivity partners.

HAI Programs

HAI Promotional Programs

- Marketing materials and product photos
- Model Home/Showroom product discount & marketing support
- Builder Partner Programs
- Five-Star Dealer Program
- End user leads
- Dealer listing on HAI Website
- Product discounts at trainings
- National trade, builder and consumer advertising and tradeshows.

HAI Support Programs

- HAI Territory Sales Managers
- Toll-free technical support
- Dealer “Software for Life”
- End user software
- 48-hour warranty repair
- EPROM chip upgrades
- New product upgrades
- Fixed cost out of warranty
- Application directory
- Dealer-only website with technical bulletins/updates, manuals, application notes, and sales tools.

HAI—Free Trainings



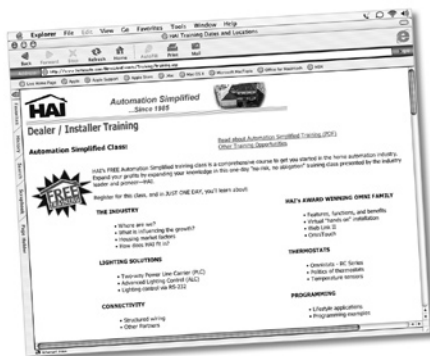
HAI offers two FREE training classes nationwide.

Automation Simplified™

Automation Simplified Class is a comprehensive course to get you started in the home automation industry. This class is typically a full day long (8:00 AM to 5:00 PM), with HAI providing lunch for all attendees. Automation Simplified Trainings have been recognized by the NBF AA and the NTS for .8 NBF AA CEU credits. Please check with your local chapter to verify that it will accept these credits.



HAI VIP Workshops are held at HAI Distribution Partner locations and are typically 2 hours long. The “VIP Workshops” are designed to meet the specific needs and requests of a Distributor’s installers. Some workshops are eligible for .2 NBF AA CEU credits. Please contact your HAI Distributor or www.homeauto.com for more information.



To register for any of the above classes or for information on other classes taught by HAI partners, please visit www.homeauto.com

CONTROLLER

In enclosure
On mounting plate

21A00-1
21A00-11



AUDIO

Omni Console w/ Speaker/Mic **33A00-4**
Surface Speaker/Microphone **28A00-1**
Flush Speaker/Microphone **28A00-2**
Two Way Voice Module **10A11-1**



SERIAL PORT

HAI Lighting Control **pg 16**
HAI Web-Link II Software **1108**
Home Control
for Media Center **1109**

EXPANSION

Omni LT Expander **22A00-1**

CONNECTIVITY

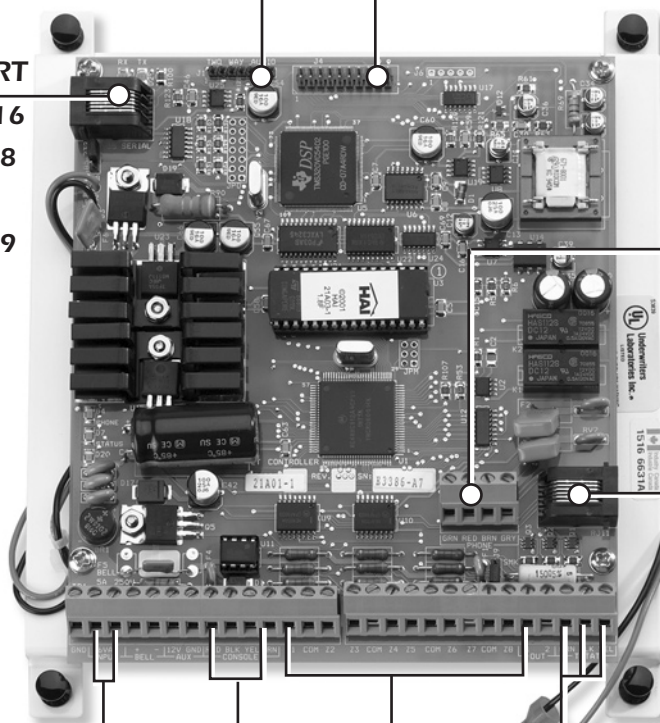
Serial Board **10A17-1**
Serial Cable **21A05-2**
ALC Lighting **Pg 13**



TELEPHONE INTERFACE

PC Access **pg 18**
Telephones
Computer Modems

2 way X-10 Interface Kit **10A09-7**



TRANSFORMER

16.5V, 40 VA
(12V Battery)

COMFORT & CONVENIENCE

HAI Omnistat Thermostats (2 max) **pg 14**

USER INTERFACE



Omni Console **33A00-1**
Flush Mount Kit **33A00-3**
OmniTouch **32A00-1**
Wireless Receiver **42A00-1**



SECURITY & ENERGY MANAGEMENT

Temperature Sensor **31A00-1**
Temperature/Humidity Sensor **31A00-2**
Standard Security/Fire/Environmental Sensors

CONTROLLER

- In enclosure **20A00-1**
- On mounting plate **20A00-7**

EXPANSION

- Zone Expander **10A06-1**

CONNECTIVITY

- Serial Board **10A17-1**
- Serial Cable **21A05-2**
- ALC Lighting **Pg 13**

AUDIO

- Omni Console w/ Spkr/Mic **33A00-4**
- Surface Speaker/Mic **28A00-1**
- Flush Speaker/Mic **28A00-2**
- Two Way Voice Module **10A11-1**

- 2 way X-10 Interface Kit **10A09-7**

SERIAL PORT

- HAI Lighting Control **pg 16**
- HAI Web-Link II Software **1108**
- Home Control for Media Center **1109**

TRANSFORMER

- 24V, 40 VA
- (12V Battery)

USER INTERFACE



- Omni Console **33A00-1**
- Flush Mount Kit **33A00-3**
- OmniTouch **32A00-1**
- Wireless Receiver **42A00-1**

TELEPHONE INTERFACE

- PC Access **pg 18**
- Telephone

SECURITY & ENERGY MANAGEMENT



- Temperature Sensor **31A00-1**
- Temperature/Humidity Sensor **31A00-2**
- Standard Security/Fire/Environmental Sensors

COMFORT & CONVENIENCE

- HAI Omnistat Thermostats **pg 14**

CONTROLLER

- In enclosure **20A00-2**
- On mounting plate **20A00-8**

EXPANSION

- Zone Expander **10A06-1**

SERIAL PORT

- HAI Lighting Control **pg 16**
- HAI Web-Link II Software **1108**
- Home Control for Media Center **1109**

CONNECTIVITY

- Serial Board **10A17-1**
- Serial Cable **21A05-2**
- ALC Lighting **Pg 13**

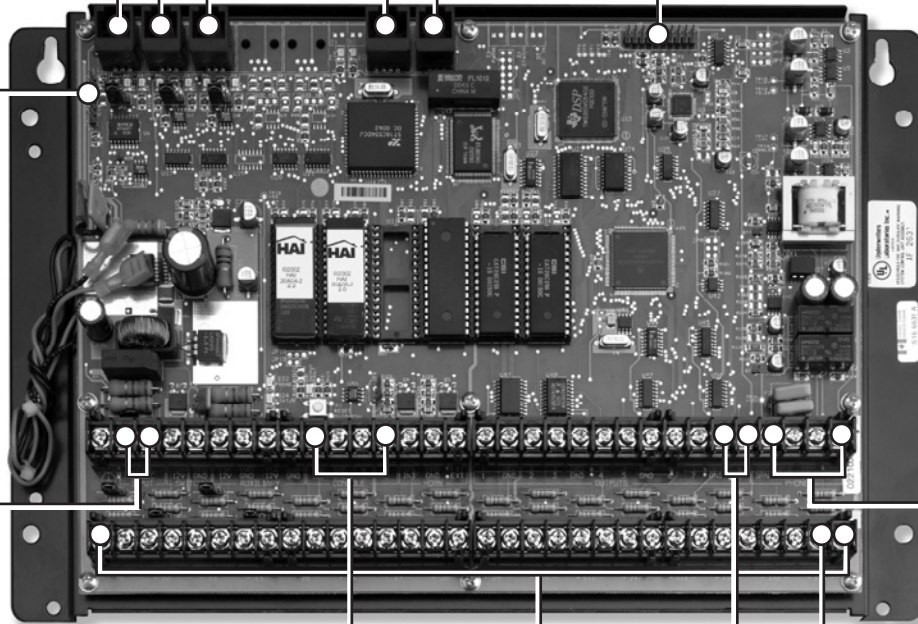


AUDIO

- Omni Console w/ Spkr/Mic **33A00-4**
- Surface Speaker/Mic **28A00-1**
- Flush Speaker/Mic **28A00-2**
- Two Way Voice Module **10A11-1**

ETHERNET PORT

- 2 way X-10 Interface Kit **10A09-7**



TRANSFORMER

- 24V, 40 VA
- (12V Battery)

USER INTERFACE



- Omni Console **33A00-1**
- Flush Mount Kit **33A00-3**
- OmniTouch **32A00-1**
- Wireless Receiver **42A00-1**
- Expansion Enclosure **17A00-1,-9**

TELEPHONE INTERFACE

- PC Access **pg 18**
- Telephone



COMFORT & CONVENIENCE

- HAI Omnistat Thermostats **pg 14**

SECURITY & ENERGY MANAGEMENT



- Temperature Sensor **31A00-1**
- Temperature/Humidity Sensor **31A00-2**
- Standard Security/Fire/Environmental Sensors

Product Index by Part Number

Part #	Description	Pg #	Part #	Description	Pg #
10A06-1	16 Zone Hardwire Expander	10	28A00-1	Surface Speaker Microphone	12
10A07-1	Relay Module (4)	11	28A00-2	Flush Speaker Microphone	12
10A09-1	Dual X-10 Transmitter Kit	13	29A00-1	Thermostat Isolation Module	14
10A09-2	Split X-10 Signal Kit.....	13	30A00-1	Thermostat Power Supply Module.	14
10A09-7	Two-Way X-10 Transceiver Kit	13	32A00-1	HAI OmniTouch	9
10A11-1	Two-way Voice Module	12	32A07-1	HAI OmniTouch Trim Ring	9
10A17-1	RS-232/RS-485 Serial Board	11	31A00-1	Indoor/Outdoor Temp Sensor	12
1101A	PESM	12	31A00-2	Indoor/Outdoor Temp & Humidity	12
1105W	HAI Dealer Software	18	31A00-7	Extended Range Indoor/Outdoor Temp Sensor	12
1106W	HAI End User Software	18	31A00-8	Extended Range Indoor/Outdoor Temp & Humidity Sensor	12
1108	HAI Web-Link II Software	18	33A00-1	Omni Console.....	9
1109	Home Control for WMC	18	33A00-3	Omni Console Flush Mount Kit.....	9
14A00-8	Water Temperature Sensor	12	33A00-4	Omni Console w/ Speaker/Mic.....	9
17A00-1	Expansion Enclosure	10	35A00-1	600W HLC Dimmer.....	16
17A00-8	Expansion Board Only.....	10	35A00-2	1000W HLC Dimmer.....	16
17A00-9	16 Zone/16 Output Expansion	10	35A00-3	600W HLC Non-Dimming Switch ..	16
18A00-5	Demo Adapter Kit	11	35A00-4	1000W HLC Non-Dimming Switch ..	16
18A00-13	OmniPro II Demo w/ OmniTouch..	13	35A14-color	HLC Switch Color Change Kit	17
19A00-1	Relay Module (8)	11	36A00-1	PIM & Cable	16
20A00-1	Omni II Controller	7	36A10-1	HLC Expansion Kit.....	17
20A00-2	OmniPro II Controller	7	36A05-2	PIM to PC Cable & Connector.....	16
20A00-4	Omni II Commercial Controller	7	363142-11	ALC Relay Switch, White.....	13
20A00-5	OmniPro II Commercial Controller ...	7	363142-12	ALC Relay Switch, Ivory	13
20A00-7	Omni II for Structured Wiring	7	363143-11	ALC 600W Dimmer, White	13
20A00-8	OmniPro II for Structured Wiring.....	7	363143-12	ALC 600W Dimmer, Ivory	13
20A00-11	Omni II Board Only	7	363144-11	ALC Program Switch, White.....	13
20A00-21	OmniPro II Board Only	7	363144-12	ALC Program Switch, Ivory	13
20A04-1UPG	Omni II Chip Upgrade.....	11	363145-11	ALC Auxiliary Switch, White	13
20A04-2UPG	OmniPro II Upgrade Chip.....	11	363145-12	ALC Auxiliary Switch, Ivory.....	13
20A07-2	Universal Mounting Plate	11	364335-11	ALC 900W Dimmer, White	13
21A00-1	Omni LT Controller	6	364335-12	ALC 900W Dimmer, Ivory	13
21A00-2	Omni LT Board Only.....	6	364355-11	ALC Cluster Switch, White	13
21A00-11	Omni LT for Structured Wiring	6	364355-12	ALC Cluster Switch, Ivory.....	13
21A03-1UPG	Omni LT Chip Upgrade	11	364736-01	ALC Enhanced Branch Hub.....	13
21A05-2	Serial Cable.....	13	37A00-1	HLC Auxiliary Switch.....	17
21A06-1	Enclosure Lock & Keys.....	10	38A00-1	HLC Room Controller, 6 button	16
21A07-2	Mounting Plate for Omni LT	10	38A00-2	HLC House Controller, 8 button.....	16
22A00-1	Expansion Module	10	38A04-color	HLC Room Controller Color Change Kit.....	17
23A00-1	Surface Mount Remote Indoor Temp Sensor	14	38A05-color	HLC House Controller Color Change Kit.....	17
23A00-2	Flush Mount Remote Indoor Temp Sensor.....	14	38A06-2	Custom Legend Kit for HLC Room or House Controller	17
25A00-1	ALC Interface, 1 Branch.....	13	39A00-1	HLC Phase Coupler	16
25A00-2	ALC Interface, 4 Branch.....	13			
27A00-2	Omni LT Demo Adapter Kit.....	11			
27A00-3	Omni LT Demo Kit.....	13			

Product Index by Part Number/Catagory

Part #	Description	Pg #	Description	Pg
40A00-1	15A HLC Relay Switch	16	Enclosure Lock and 2 Keys	10
42A00-1	Wireless Receiver for GE InterLogix	12	Expansion Enclosure	10
44A00-1	Lumina Controller	17	Mounting Plate for Omni II/ OmniPro II	11
44A00-2	Lumina Pro Controller	17	Mounting Plate for Omni LT	10
45A00-1	64 Zone Wireless Receiver	15	PESM	12
46A00-1	Door/Window Transmitter	15	Relay Modules	11
47A00-1	Quad Pet Immune Motion Detector	15	RS-232/RS-485 Serial Board	11
48A00-1	4 Button Keyfob	15	Serial Cable to Omni Controllers	13
49A00-1	Smoke & Carbon Monoxide Detector w/ Voice Alarm	15	Speaker/Microphone Modules	12
50A00-1	Panic/Alert Pendant	15	Two-Way Voice Module	12
OMNILT-MS	Omni LT Manuals	20	Consoles & Touchscreens	9
OMNIIII-MS	Omni II Manuals	20	HAI Software	18
OMNIPROII-MS	OmniPro II Manuals	20	Lighting	
Promo 9	Omni LT w/ Surface Console	6	HAI Lighting Control Switches	16
Promo 9S	Omni LT for Structured Wiring	6	HAI Lighting Control Controllers, Room/House	16
Promo 10	Omni LT Kit	6	HAI Lighting Control Accessories	16-17
Promo 10S	Omni LT Kit for Structured Wiring	6	Misc Lighting	13
Promo 11	Omni LT Starter Kit	6	X10 Kits & ALC Switches	13
Promo 12	Omni II Kit w/ Flush Console	8	Literature	
Promo 12S	Omni II Kit for Structured Wiring	8	3-Fold Brochures	19
Promo 14	Omni II Starter Kit	8	Model Home Support	20
Promo 15	OmniPro II Kit w/ Flush Console	8	Owner Manuals	20
Promo 15S	OmniPro II Kit for Structured Wiring	8	Spec Sheets	20
Promo 16	OmniPro II Starter Kit	8	Training CD	20
RC-80B	Single Stage Heat/Cool	14	Lumina Controllers	17
RC-90B	Single Stage Heat/Cool for Zoned	14	Omni Controllers	
RC-100B	Heat Pump	14	Omni II Controller	7
RC-112B	Two Speed Heat Pump	14	Omni II Promo Kits	8
RC-122B	Two Stage Heat/Cool	14	Omni LT Controller	6
RC-201	Serial Cable	14	Omni LT Promo Kits	6
SA-23	Model Home Displays	20	OmniPro II Controller	7
SA-28	Model Home FAQ	20	OmniPro II Promo Kits	8
TRAINCD	Training CD	20	Temperature Control	

Index By Category

Accessories

16 Zone Expansion Boards	10
16 Zone Expansion Hardware Expander	10
Chip Upgrades	11
Demo Systems	13
Demo Adapter Kits	11

Wireless Security Products

HAI Wireless Products	15
Wireless Receiver for GE InterLogix	12

Wiring Diagrams

Notes





*visit us at
www.homeauto.com*



www.homeauto.com

*HAI—a proven track record of reliable, affordable,
and award winning products since 1985.*

